

# WIN-PAK® SE 3.0 WIN-PAK® PE 3.0



## Integrated Security Software

Honeywell's WIN-PAK® integrated security software seamlessly combines full scale security integration with access control, digital video and security. WIN-PAK's powerful user interface allows dealers to install a single software for all of their customers' security needs.

- **WIN-PAK SE 3.0 (Standard Edition)** is the baseline software package for access control and standard video integration. The add-on VISTA intrusion module can further enhance the integration platform. WIN-PAK SE 3.0 is ideal for small to medium integrated security applications.
- **WIN-PAK PE 3.0 (Professional Edition)** combines all the features of SE plus an unrestricted number of client workstations; full support for multiple department/site applications; support for multiple communication servers; VISTA intrusion and advanced video integration. All inclusive—no additional upgrades needed.

WIN-PAK optimizes system performance and total cost of ownership by supporting multiple Honeywell platforms—including access control, video surveillance and intrusion—from a single user interface. The benefit is seamless integration that offers a common look and feel for access control hardware as well as video and intrusion solutions. Functions that have traditionally been tied together with physical relays and input devices are now controlled logically. This simplicity gives users greater control over their systems than they had using multiple software platforms and interfaces, and is an improvement over a typical nonintegrated solution where devices are not aware of what other devices are doing. Reducing the total cost of ownership is always at the forefront of Honeywell products. Unlike other software

manufacturers, Honeywell does not charge license fees per reader, which saves users money.

Quick start wizards help make WIN-PAK easy to install and program. Content-sensitive help provides instant documentation. Tips and links lead users to answers to common operating questions.

WIN-PAK's intrusion integration provides a virtual keypad for operators to view the status and control their system remotely. This is ideal for monitoring remote sites, as well as managing multiple sites from a single location. WIN-PAK simplifies the access control process and prevents false alarms by allowing supervisors to arm or disarm the system with any valid card. It also offers video integration directly from the user interface and no longer requires relays and costly wire runs to trigger event recording. WIN-PAK's new video interface provides users with a more robust functionality combined with an updated look and feel. Video integration allows the operator to choose which events trigger live camera pop-ups such as video motion, power loss on access panel or invalid PIN number entered; view stored video based on filters of past events. Advanced video integration (WIN-PAK PE 3.0) adds the ability to choose which camera presets should be triggered and allows the activation of multiple cameras per event, providing multiple angles to catch all the details required.

WIN-PAK offers advanced reporting capabilities that customers are demanding, so users can create customized reports or choose from a variety of predefined reports that can be emailed or exported. Whether you require a simple or comprehensive security solution, WIN-PAK is the right choice for now and the future.

## FEATURES

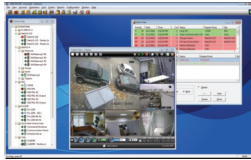
- Integrate access control, digital video and intrusion
  - Arm or disarm with a card read
  - Record and playback access, intrusion or video events and alarms
  - Define up to four cameras and presets to respond per event (WIN-PAK PE 3.0 only)
  - Programmable camera presets per alarm or event (WIN-PAK PE 3.0 only)
  - Alarm video popup and user verification
  - Synchronized video playback with access, intrusion or video events
  - Define and extract video clips
- Manage cardholders through multiple locations
- Quick start setup and configuration wizards
- Real-time alarm/event monitoring
  - 99 priority levels
  - Control and response, including acknowledge, clear, annotate, live video, recorded video
  - Manual override, lock and unlock doors, shunt/unshunt zones and input points
  - Manual override of system functions
    - Lock and unlock doors
    - Arm/disarm partitions and zone
    - Bypass/un-bypass zones
  - Generate predefined or customized reports using easy templates
  - Schedule email or printed reports
- CCTV control interface to most popular matrix switchers
- Schedule guard tours
- Elevator control
- Anti-passback processing
- Content-sensitive help screens
- Dynamic floor plans
  - Control devices
  - Floor plan linking
  - Acknowledge/clear alarms
  - Visual feedback
  - SQL Server 2008 Express Edition R2 database included
- 64-bit and 32-bit supported operating systems: Windows® 7 Professional, Windows 7 Ultimate, Windows Server 2008 R2, Windows Vista Enterprise, Windows Vista Business, Windows XP Professional SP3 and Windows 2003 Server

# WIN-PAK® SE 3.0

# WIN-PAK® PE 3.0

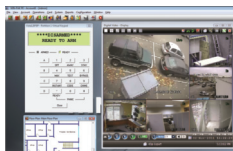
## Integrated Security Software

## BENEFITS



### Seamless Integration

WIN-PAK brings together Honeywell's access control system, VISTA intrusion control panel, Rapid Eye™ Multi-Media Series, MAXPRO® NVR SE/SE, Fusion Series and HRDP Series DVR systems. The seamless integration of these systems under WIN-PAK provides a common look and feel throughout. This eliminates the confusion and compatibility issues brought on by different systems from many manufacturers.



### Increased Intrusion Function

Add WIN-PAK to an existing VISTA-128BPT, VISTA-250BPT, VISTA-128FBP or VISTA-250FBP installation and disarm partitions from a single valid card read or arm partitions by presenting the card three times to the reader; manage and monitor the intrusion system from the virtual keypad; assign user codes to cardholders; monitor and control points from a floor plan; generate customized reports for intrusion events and user actions, real-time event and alarm reporting, and more. Integration is included with WIN-PAK SE 3.0 – optional for WIN-PAK PE 3.0.



### No Need to Retrain

WIN-PAK integrates with Honeywell products that have been trusted by customers for years. WIN-PAK, VISTA, Rapid Eye, Fusion and HRDP provide a familiar look and feel to existing installations and require little or no additional time for installation and programming.



### Fast and Easy Setup

Setup is quick and easy using quick start wizards. Wizards make programming simple by taking users step-by-step through basic installation and programming. Content-sensitive help is available anywhere in the program by pressing F1.



### Enhanced Security

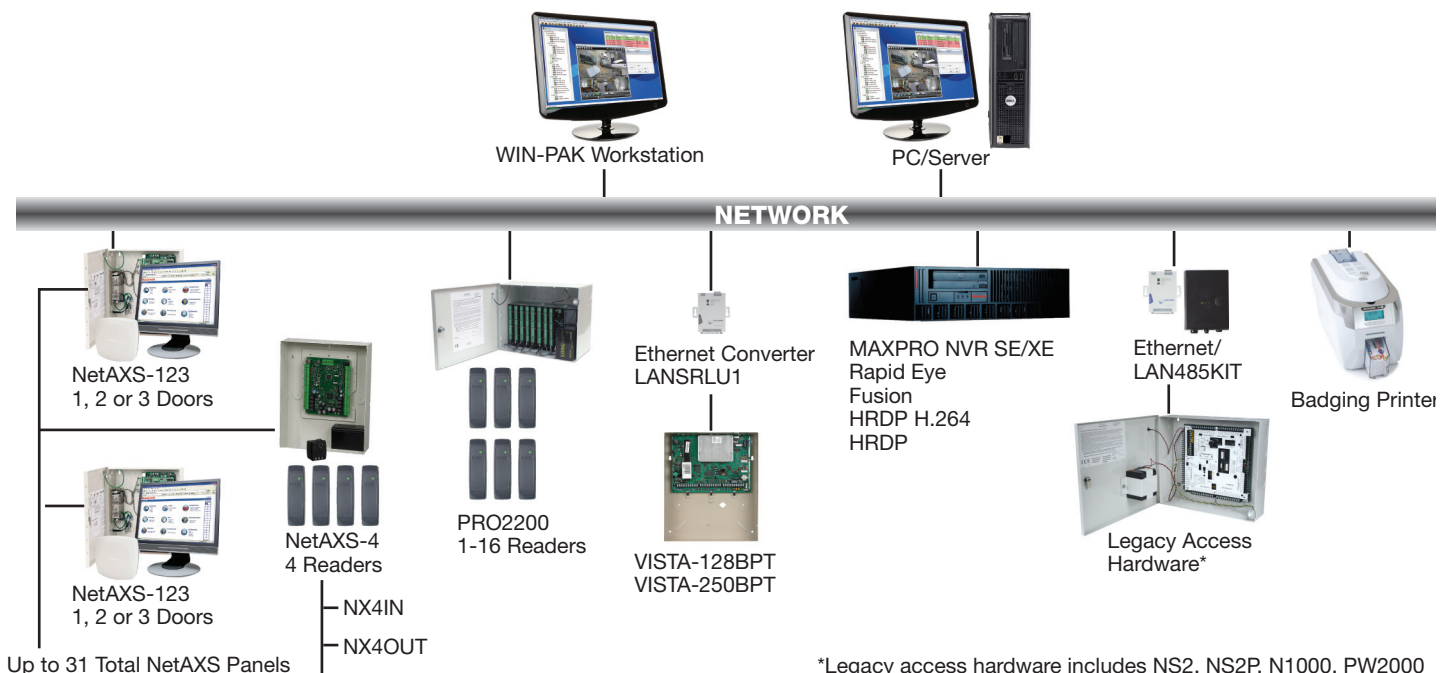
Integration to Honeywell's video products provides flexibility to match the right hardware to each application and provide camera popup on alarm and system events, video clip retrieval; PTZ and preset control. Advanced video integration (WIN-PAK PE 3.0 only) allows up to four cameras to be called per event type (depending on selected DVR); calls cameras to go to preset; defines if manual PTZ override is allowed during the event; and record instant, intensive or custom per camera. Access, intrusion and video events notify the operator, alerting users to view live video or easily retrieve video playback.



### Reduce False Alarms, Unauthorized Access

WIN-PAK SE 3.0 with VISTA integration option (standard with WIN-PAK PE 3.0) reduces unwanted alarms caused by improper keypad operation, incorrect codes or unauthorized access to sensitive areas. Reports can be generated to help businesses improve on their operating efficiencies.

## CONFIGURATION



\*Legacy access hardware includes NS2, NS2P, N1000, PW2000

## INTEGRATION CAPABILITIES

Honeywell's innovative WIN-PAK with video and intrusion integration combines the three most common security requirements from customers together under one common user interface. Ownership costs associated with training, maintenance and the ability to make system changes on the fly are reduced. Integration is achieved in the software, so there are no interruptions to the workplace caused by hardware and wire installations.

### Key Integration Features

- Grant access and disarm system on valid card read
- Arm system on valid triple card read
- View live video from up to 16 cameras simultaneously
- Valid/invalid cardholder verification
- Arm/disarm video verification
- Pop-up video on access or intrusion function
- Virtual alarm touchpad
  - View intrusion control panel status
  - VISTA keypad control through WIN-PAK software
- Live system control
  - Arm/disarm intrusion system
  - Multiple partition control
  - Bypass/unbypass doors
  - Live camera view, including PTZ
- Define up to four different camera and presets per event type (WIN-PAK PE 3.0).

### Key Integration Benefits

- Save time and money by managing three separate systems with one easy-to-use software interface.
- Improve the level of security by eliminating use of keys or user code sharing. Increase security by using a unique card to disarm a system and grant access at the door.
- WIN-PAK software interface allows users to retrieve and play back alarms associated with intrusion and access control.
- Automated reporting allows users to send up-to-date reports on intrusion and access events hourly, daily, weekly or monthly.
- Reduce employee down-time by only requiring training on one system.
- Expand to meet current and future needs. Start with access and add video or intrusion later as requirements change.

### Typical Applications

- Office buildings
- Warehouses
- Convenience stores
- Daycare centers
- Schools/universities
- Retail establishments
- Pharmacies
- Hospitals/medical offices
- Light industrial
- Restaurants

## SUPPORTED INTEGRATION DEVICES



# WIN-PAK® SE 3.0

# WIN-PAK® PE 3.0

## Integrated Security Software

### ORDERING

#### WIN-PAK SE 3.0

<b>WPS3</b>	WIN-PAK SE 3.0
<b>WPS3V</b>	WIN-PAK SE 3.0 with VISTA
<b>WPS3U5</b>	WIN-PAK SE 3.0 Five user
<b>WPS3U5V</b>	WIN-PAK SE 3.0 Five user with VISTA

#### WIN-PAK SE 3.0 Upgrades

<b>USXS3</b>	Upgrade from WIN-PAK 2005/SE/SE 2.0 - Same options and users to WIN-PAK SE 3.0
<b>US3S3V</b>	Upgrade from WIN-PAK SE 3.0 Single user (WPS3) to WIN-PAK SE 3.0 Single user with VISTA (WPS3V)
<b>US3S3U5</b>	Upgrade from WIN-PAK SE 3.0 Single user (WPS3) to WIN-PAK SE 3.0 Five user (WPS3U5)
<b>US3S35V</b>	Upgrade from WIN-PAK SE 3.0 Single user (WPS3) to WIN-PAK SE 3.0 Five user with VISTA (WPS3U5V)
<b>US3VS35V</b>	Upgrade from WIN-PAK SE 3.0 Single user with VISTA (WPS3V) to WIN-PAK SE 3.0 Five user with VISTA (WPS3U5V)
<b>US3S35V</b>	Upgrade from WIN-PAK SE 3.0 Five user (WPS3U5) to WIN-PAK SE 3.0 Five user with VISTA (WPS3U5V)

#### WIN-PAK PE 3.0

<b>WPP3</b>	WIN-PAK PE 3.0
-------------	----------------

#### WIN-PAK PE 3.0 Upgrades

<b>UPP3</b>	Upgrade from WIN-PAK PE (WPPE) or WIN-PAK PE 2.0 (WPP2) to WIN-PAK PE 3.0 (WPP3)
<b>US3P3</b>	Upgrade from WIN-PAK SE 3.0 Single user (WPS3) to WIN-PAK PE 3.0 (WPP3)
<b>US35P3</b>	Upgrade from WIN-PAK SE 3.0 Five user (WPSU53) to WIN-PAK PE 3.0 (WPP3)

#### WIN-PAK SE 3.0/WIN-PAK PE 3.0 Hardware Keys for RAID Applications

<b>WPS2K</b>	WIN-PAK SE 3.0/WIN-PAK SE 2.0 hardware key
<b>WPS2U5K</b>	WIN-PAK SE 3.0/WIN-PAK SE 2.0 Five user hardware key
<b>WPP2K</b>	WIN-PAK PE 3.0/WIN-PAK PE 2.0 hardware key

WIN-PAK® is registered trademark of Honeywell International Inc.

Microsoft®, Windows® Server 2008, Windows 7, Windows Vista, Windows 2003 Server and Windows XP are registered trademarks of Microsoft Corporation

### COMPUTER REQUIREMENTS

The following are the hardware and software requirements to install WIN-PAK on your computer:

- **Minimum:** stand-alone computer that supports 1 to 10 readers, 250 cards (access only – no video integration)
- **Recommended Server:** computer that supports 1 to 100 readers, 5,000 cards, OS licensed per the number of workstations needed and communication ports per your application
- **Performance:** supports more than 100 readers, 50,000+ cards, 150,000 events per day

	Minimum (No video integration)	Minimum/Workstation	Recommended	Performance
<b>Operating System</b>	Windows XP Professional SP3 (no video integration)	Windows 7 Professional	Windows Server 2008 R2 Service Pack 1	Windows Server 2008 R2 Standard Service Pack 1
<b>Database</b>	SQL Server 2008 R2 Express (included)	SQL Server 2008 R2 Express (included)	SQL Server 2008 R2 Express (included)	SQL Server 2008 R2 with processor license recommended
<b>Processor</b>	Intel® Pentium IV	Intel® Core™ i5 2400	Quad Core Intel®	Intel® Quad Core Xeon®
<b>CPU</b>	2.4 GHz	3.1 Ghz	2.4 GHz	2.4 GHz
<b>RAM</b>	4 GB	4 GB	8 GB	16 GB
<b>Hard Disk</b>	80 GB STATA with minimum 5 GB free	80 GB STATA with minimum 5 GB free	250 GB STATA or SCSI	1 TB 15000 RPM drives configured as: OS on RAID1; DB RAID 1+0 (4-disk)
<b>Video Card</b>	No video integration – Standard video card	1x512MB PCIe x16**	1x512MB PCIe x16**	1x512MB PCIe x16**

Consult factory for other advanced applications

\*\*Recommended video card for video integration is NVIDIA Quadro NVS 300 - 1x512MB PCIe x16 or similar

#### For more information:

[www.honeywellaccess.com](http://www.honeywellaccess.com)

#### Automation and Control Solutions

Honeywell Systems  
2700 Blankenbaker Pkwy, Suite 150  
Louisville, KY 40299  
1.800.323.4576  
[www.honeywell.com](http://www.honeywell.com)

**Honeywell**

L\WNP\KINTD\D  
December 2011  
© 2011 Honeywell International Inc.